



PNEUMATIC
Since 1999



Professional
Creates
Quality

2V Series Solenoid Valve



2V	025	08	I	10F
Spec Code	Standard Diameter	Port Size	Wiring Mode	Connection Code
two-Port two-Position Solenoid Valve	025:2.5mm	06:G1/8" 08:G1/4'	Blank:DIN Socket Type I:Outgoing type	2F:Two sets 3F:Three sets ... 10F:Ten sets

3V1 Series Solenoid Valve



3V	1	-	06	-	A	-	I	-	G	-	□
Spec Code	Standard Diameter	Port Size	Standard Voltage	Wiring Mode		Tooth profile code		Valve body identification code			
three-Port two-Position Solenoid Valve	1:1 Series	06:G1/8" 08:G1/4'	A:AC220V	Blank:DIN Socket Type		Blank: PT shape		Blank:Series-connected type			
			B:AC110V	I:Outgoing type		T:NPT shape		D:Single-unit type			
			C:AC380V			G:G shape					
			D:AC36V								
			E:AC24V								
			F:DC24V								
			G:DC12V								

* 1.When the connection is M5 thread,this item is left blank.

3V Series Solenoid Valve



3V	1	500	06	NC	A	I	T
Spec Code	Series Code	Electric Control method	Port Size	Initial State	Standard Voltage	Wiring Mode	Tooth Profile Code
three-Port two-Position Solenoid Valve	1:100 Series 2:200 Series 3:300 Series	10: Dual Position Single Electric Control 20: Dual Position Dual Electric Control	06:G1/8" 08:G1/4'	NC:Normal Close NO:Normal Ope	A:AC220V B:AC110V C:AC380V D:AC36V E:AC24V F:DC24V G:DC12V	Blank:DIN Socket Type I:Outgoing Type	Blank: PT Shape T:NPT shape G:G shape

* 1.When the connection is M5 thread,this item is left blank.

4V Series Solenoid Valve



4V	1	20	M5	A	I	T
Spec Code	Series Code	Electric Control Method	Port Size	Standard Voltage	Wiring Mode	Tooth Profile Code
five-Port two-Position Solenoid Valve	1:100 Series 2:200 Series 3:300 Series	10: Dual Position Single Electric Control 20: Dual Position	M5:M5 06:PT1/8 08:PT1/4 10:PT3/8 15:PT1/2	A:AC220V B:AC110V C:AC380V D:AC36V E:AC24V F:DC24V G:DC12V	Blank:DIN Socket Type I:Outgoing Type	Blank: PT Shape T:NPT shape G:G shape
five-Port three-Position Solenoid Valve	4:400 Series	Dual Electric Control 30C:Three-position dual-electric control with center-closed type 30E:Three-position dual-electric control with center-exhaust type 30P:Three-position dual-electric control with mid-pressure exhaust type				

4M Series Solenoid Valve



4M	1	10	10	A	1
Spec Code	Series Code	Electronic Control Mode	Port Size	Standard Voltage	Wiring Mode
Five-Port	1:100 Series	10:Two-Position	M5:M5	A:AC220V	Blank:DIN Socket Type
Two-Position	2:200 Series	Single-Electrical Control	06:PT1/8	B:AC110V	1:Outgoing Type
Solenoid Valve	3:300 Series	20:Two-Position	08:PT1/4	C:AC380V	
	4:400 Series	Dual-Electrical Control	10:PT3/8	D:AC36V	
				E:AC24V	
				F:DC24V	
				G:DC12V	

VF3 Series Solenoid Valve



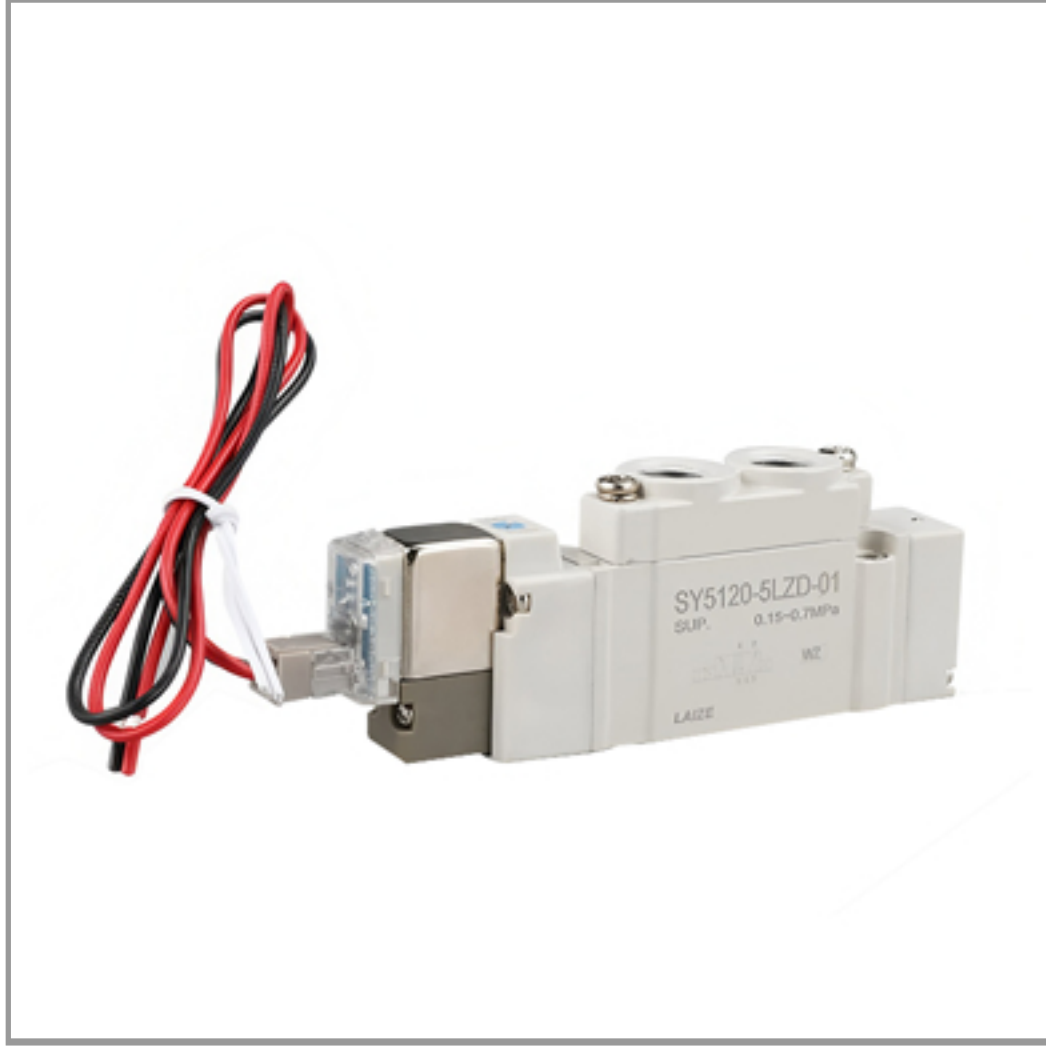
VF3	130	A	G	B	02
Spec Code	Coil and Number of Positions	Standard Voltage	Wire Type	Manual Operation	Threaded Interface
Five-Port	130:Two Position Five Port Single Head	A:AC220V	G:Straight-Through Wiring		02:PT1/4
Two-Position	230:Two Position Five Port	B:AC110V	D:DIN Socket Type		
Solenoid Valve	Dual Head Dual-Position	C:AC380V	DZ:DIN Socket Type with Light		
	330:Three Position Five Port Dual Head	D:AC36V			
	Three Position Center-Closed Type	E:AC24V			
	430:Three Position Five Port Dual Head	F:DC24V			
	Three Position Exhaust Type	G:DC12V			
	530:Three Position Five-Port Dual Head				
	Three Position Pressure Type				

VF5 Series Solenoid Valve



VF5	120	A	G	B	02
Spec Code	Coil and Number of Positions	Standard Voltage	Wire Type	Manual Operation	Threaded Interface
	120:Two Position Five Port Single Head	A:AC220V	G:Straight-Through Wiring		02:PT1/4
	220:Two Position Five Port	B:AC110V	D:DIN Socket Type		
	Dual Head Dual-Position	C:AC380V	DZ:DIN Socket Type with Light		
	320:Three Position Five Port Dual Head	D:AC36V			
	Three Position Center-Closed Type	E:AC24V			
	420:Three Position Five Port Dual Head	F:DC24V			
	Three Position Exhaust Type	G:DC12V			
	520:Three Position Five-Port Dual Head				
	Three Position Pressure Type				

SY Series Solenoid Valve



SY	3120	M5	DC24V	G
Spec Code	Specifications	Connection Type	Operating Voltage	Wiring Method
	3120 3220	C4 C6 C8	DC12 DC24	M:Linear Type
	5120 5220	C10 M5 G1/8	AC110 AC220	G:Lead-Wire Type
	7120 7220	G3/8		
	9120 9220			

* Note:
The 3000 series supports direct manifold mounting with C4 and C6.
The 5000 series supports C4, C6, and C8.
The 7000 series supports C8 and C10.

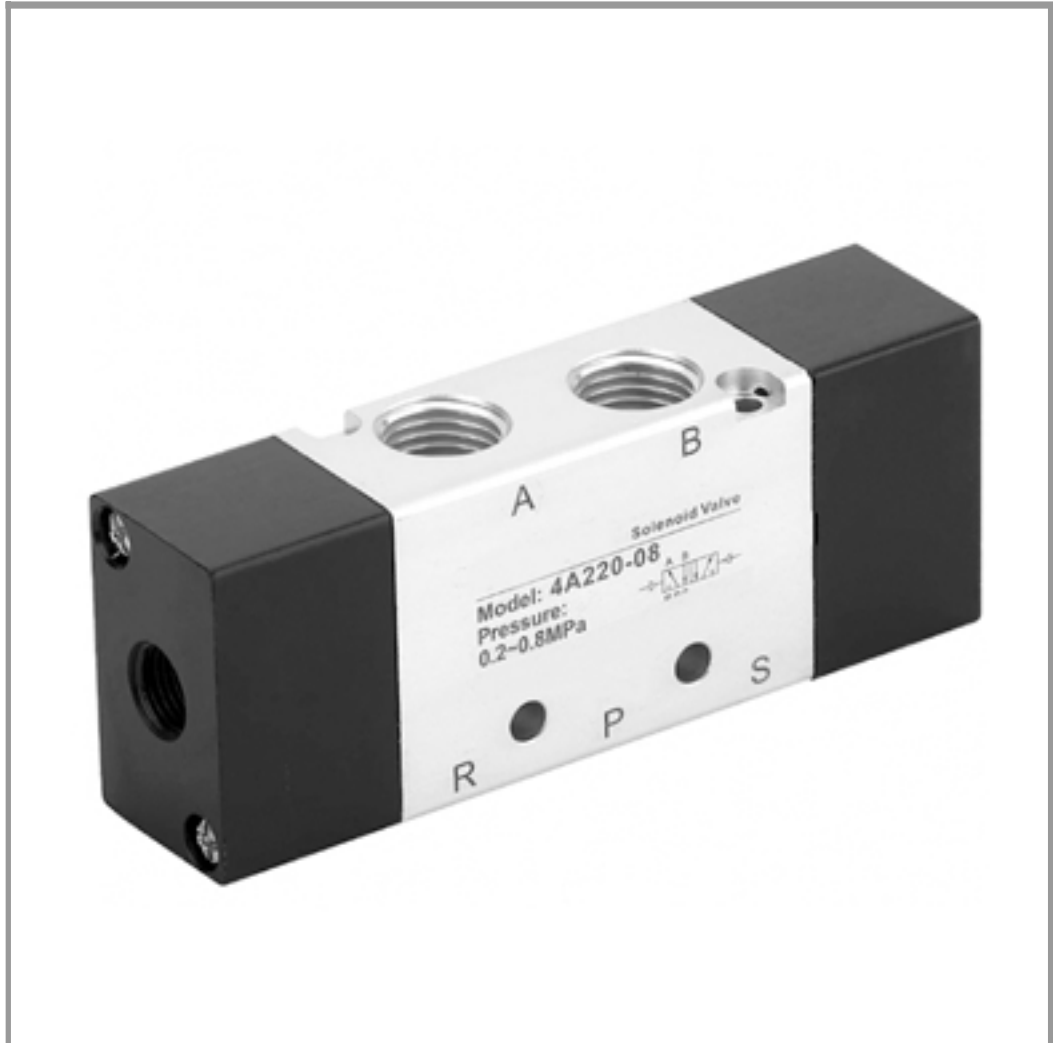
3A Series Air Control Valve



3A	1	10	06	NO
Spec Code	Series Code	Pneumatic Control Method	Port Size	Initial State
3A:Three-Port Two-Position Pneumatic Valve	1:100 Series 2:200 Series 3:300 Series 4:400 Series	10:Two-Position Single Pneumatic Control 20:Two-Position DualPneumatic Control 30C:Three-Position Dual Pneumatic Control with Center-Closed Type 30E:Three-Position Dual Pneumatic Control with Center-Exhaust Type 30P:Three-Position Dual Pneumatic Control with Center-Pressure Exhaust Type	M5:M5 06:PT1/8 08:PT1/4 10:PT3/8 15:PT1/2	NC:Normal Close NO:Normal Open

* If the dual-position, dual-electric control does not distinguish between NO and NC,

4A Series Air Control Valve



4A	1	10	06	NO
Spec Code	Series Code	Pneumatic Control Method	Port Size	Initial State
4A:Five-Port Two (Three)-Position Pneumatic Control Valve	1:100 Series 2:200 Series 3:300 Series 4:400 Series	10:Two-Position Single Pneumatic Control 20:Two-Position DualPneumatic Control 30C:Three-Position Dual Pneumatic Control with Center-Closed Type 30E:Three-Position Dual Pneumatic Control with Center-Exhaust Type 30P:Three-Position Dual Pneumatic Control with Center-Pressure Exhaust Type	M5:M5 06:PT1/8 08:PT1/4 10:PT3/8 15:PT1/2	NC:Normal Close NO:Normal Open

* If the dual-position, dual-electric control does not distinguish between NO and NC,

3H/4H Series Manual Valve



3H/4H	2	10	06
Spec Code	Series Code	Position Code	Port Size
3H:Three-Port Two-Position 4H:Five-Port Two-Position	1:100 Series 2:200 Series 3:300 Series 4:400 Series	10:Single-Double Position	06:G1/8 08:G1/4 10:G3/8 15:G1/2

3R/4R Series Manual valve



3R/4R	2	10	06
Spec Code	Series Code	Position Code	Port Size
3R:Three-Port Two-Position 4R:Five-Port Two-Position	1:100 Series 2:200 Series 3:300 Series 4:400 Series	10:Single-Double Position	06:G1/8 08:G1/4 10:G3/8 15:G1/2

3V/4V Series Manifold



3V/4V	1	5F	T
Spec Code	Series Code	Connection Code	Tooth Profile Code
	1:100 Series Base 2:200 Series Base 3:300 Series Base 4:400 Series Base	1F:One Sets 2F:Two Sets ... 20F:Twenty Sets	Blank: PT Shape T:NPT Shape G:G Shape

* The 100M and 200M series support up to 16 seats per manifold, the 300M series supports up to 12, and the 400M series supports up to 8.

SY Series Assembled Plate Solenoid Valve(Accessories)



SY	3	2	OOF
Spec Code	Containerized Series	Container Capacity	Thread Type
	3:SY3000 5:SY5000	2 Digits ... 20 Digits *Including Cover Plate Components	Unsigned:RC OOF:G OON:NPT OOT:NPTF

Valve Island



DB25	S	14	150
Spec Code	Marking:Connector	Marking:Controllable Number of Coils	Marking:Wire Length
Marking:Connector DB25:DB Connector 126:Cow Horn Joint	S:Single Connector D:Double Connector	14:14 24:24	150:1.5m 300:3m Customized

4HV Series Hand-Switching Valve



4HV	2	10	06	S
Spec Code	Series Code	Location Code	Port Size	Mounting Type
three-Port two-Position Solenoid Valve	2:200 Series 3:300 Series 4:400 Series	10:Four-Port Two-Position 30:Four-Port Three-Position	2 Digits 06:G1/8" 3 Digits 08:G1/4" 4 Digits 10:G3/8"	Blank:Valve Installation S:Panel Installation

HV Series Hand-Switching Valve



HV	2	00	A	02	P
Spec Code	Series Code	Series Code	Function Code	Port Size	Connection Type
	2:200 Series 3:300 Series	00:Two-Position Four-Way 30:Three-Position Four-Way	Blank:Basic Type Four-SideInterface A: Bottom Interface B: Two-Side Interface	02:PT1/4 03:PT3/8 04:PT1/2	blank:Iron Handle P:Plastic Handle

K24/K34 Series Hand-Switching Valve



K	24	R6	BL	D
Spec Code	Series Code	Function Code	Port Size	Connection Type
	24:Two-Position Four-Way 34:Three-Position Four-Way	R6:Hand Operated Valve L6:Connection Type	BL:G1/4	Blank:Two-Side Connections D:Bottom Connections S:Four-Side Connections

FV320/420 Series Foot Valve



FV	420	08
Spec Code	Series Code	Port Size
FV:Foot Pedal Valve	320:Three-Port Two-Position 420:Four-Port Two-Position	8:1/4G

4F210 Series Foot Valve



4F	2	10	08	L
Spec Code	Series Code	Position Code	Port Size	Connection Type
4F:Two-Position Five-Way Foot Pedal Valve	2:200 Series	10:Single-Double Position	8:1/4G	Blank:Standard Formula L: Lockable Type F: Enclosed Shield Type LF: Lock and Shield Type

OPT Series Drainers



OPT	A	01
Specification Description	Product Structure	Port Size
OPT Low-Pressure Electronic Drain Valve (Up to 16 KG) MIC High-Pressure Electronic Drain Valve (Up to 40/80 KG)	2:200 Series	G1/2

2W Series Fluid Control Valve



2W	160	10	AC110V	
Spec Code	Nominal Diameter	Port Size	Coil Voltage	
Three-Port Two-Position Solenoid Valve	025:2.5mm	06:1/8"	DC12V	
	040:4.0mm	08:1/4"	DC24V	
	160:16mm	10:3/8"	AC24V	50Hz/60Hz
	200:20mm	15:1/2"	AC36V	50Hz/60Hz
	250:25mm	20:3/4"	AC110V	50Hz/60Hz
	350:35mm	25:1"	AC220V	50Hz/60Hz
	400:40mm	35:1 1/4"	AC380V	50Hz/60Hz
	500:50mm	40:1 1/2"		
		50:2"		

2L Series Fluid Control Valve



2L	170	15	AC110V	D
Spec Code	Flow Orifice	Port Size	Coil Voltage	Wiring Mode
Three-Port Two-Position Solenoid Valve	170:17mm	10:3/8"	DC12V	Blank:Indicates Lead-Type Iron Shell Coil
	200:20mm	15:1/2"	DC24V	
	300:30mm	20:3/4"	AC24V 50Hz/60Hz	D:Terminal Box-Type Encapsulated Coil
	500:50mm	25:1"	AC36V 50Hz/60Hz	
		35:1 1/4"	AC110V 50Hz/60Hz	
		40:1 1/2"	AC220V 50Hz/60Hz	
		50:2"	AC380V 50Hz/60Hz	

2S Series Fluid Control Valve



2S	030	08	F	AC110V	D
Spec Code	Flow Orifice	Port Size	Mounting Type	Coil Voltage	Wiring Mode
Two-Position Two-Way Solenoid Valve	030:30mm	06:1/8"	Blank:	DC12V	Blank:Indicates Lead-Type Iron Shell Coil
	040:40mm	08:1/4"	Pipe Connection Type	DC24V	
	160:16mm	10:3/8"	F: with Flange Type	AC24V 50Hz/60Hz	D:Terminal Box-Type Encapsulated Coil
	200:20mm	15:1/2"		AC36V 50Hz/60Hz	
	250:25mm	20:3/4"		AC110V 50Hz/60Hz	
	350:35mm	25:1"		AC220V 50Hz/60Hz	
	400:40mm	35:1 1/4"		AC380V 50Hz/60Hz	E:Explosion-Proof Coil G: Waterproof Coil
	500:50mm	40:1 1/2"			
		50:2"			

2Q Series Fluid Control Valve



2Q	160	25
Spec Code	Flow Orifice	Port Size
Two-Position Two-Way Pneumatic Control Valve	160:16mm	10:3/8"
	200:20mm	15:1/2"
	250:25mm	20:3/4"
	350:35mm	25:1"
	400:40mm	35:1 1/4"
	500:50mm	40:1 1/2"
		50:2"

HSV Series Hand Slide Valve



HSV	08	SS
-----	----	----

Model Code	Port Size	Function Code
HSV: Hand Slide Valve	06:G1/8" 08:G1/4" 10:G3/8" 15:G1/2" 20:G3/4" 25:G1"	Blank: Standard Type SS:Double External Thread Type FF:Double Internal Thread Type SF:External and Internal Thread Type

ASC Series Unidirectional Throttle Valves



ASC	300	10
-----	-----	----

Model Code	Port Size	Function Code
ASC: One-Way Flow Control Valve	100:100 Series 200:200 Series 300:300 Series	100 Series:06-G1/8" 200 Series:08-G1/4" 300 Series:10-G3/8" 15-G1/2"

RE Series Flow Control Valve/Quick Exhaust Valve



RE	01
----	----

Model Code	Port Size
RE: Flow Control Valve	01:Rc1/8 02:Rc1/4 03:Rc3/8 04:Rc1/2

QE Series Flow Control Valver/Quick Exhaust Valve



QE	01
----	----

Model Code	Port Size
QE: Quick Exhaust Valve	01:Rc1/8 02:Rc1/4 03:Rc3/8 04:Rc1/2

KA Series One-Way Valve



KA	06
----	----

Model Code	Port Size
Check Valve	06:G1/8" 15:G1/2" 08:G1/4" 20:G3/4" 10:G3/8" 25:G1"

ST Series Shuttle Valve



ST	01
----	----

Model Code	Port Size
ST:Spool Valve	01:G1/8 02:G1/4 03:G3/8 04:G1/2

MOV321 Series Mechanical Valves



MOV	32	1	R
-----	----	---	---

Model Code	Positon Code	Port Size	Button Type
Mechanical Valve	32:Two-Position Three-Way	01:G1/8	Blank:Basic Type R:Roller Type TB:Selector Knob Type EB:Lockable Knob Type PP:Flat Button PPL:Convex Button PB:Large Round Button

JM322 Series Mechanical Valves



JM	32	2	R
----	----	---	---

Model Code	Positon Code	Port Size	Button Type
JM Type Mechanical Valve	32:Two-Position Three-Way	02:G1/4	Blank:Basic Type R:Roller Type TB:Selector Knob Type EB:Lockable Knob Type PP:Flat Button PPL:Convex Button PB:Large Round Button

CM3 Series Mechanical Valves



CM3	PP	06	R
-----	----	----	---

Model Code	Spec Code		Port Size	Button Color	
CM3 Type Mechanical Valve	B:Basic Type Mechanical Valve	PM:Mushroom Head	05:M5	Model B/P/L/V/Y	No
	C: Long-Handle Manual Valve	Button Type Manual Valve	06:G1/8"	Model PL	R:Red
	D: Short-Handle Manual Valve	PMS:Mushroom Head	08:G1/4"	Model PP/PF/PM/	R:Red
	Y: Lever-Operated Manual Valve	Button Type Manual Valve (with Protective Cover)		PMS/PMX/HS/HD	G:Green
R:Roller Lever Mechanical Valve	P:Large Mushroom Head			B:Black	
	L:One-Way Roller Lever Mechanical Valve	Button Type Manual Valve (with Protective Cover)			Y:Yellow
	PL: Detent Rotary Button Type Manual Valve (Only Red Available)	HS:Selector Type Manual Valve			
	PP:Raised Head Button Type Manual Valve	HD:Double-Acting Selector Type Manual Valve			
	PF: Flat-Head Button Type Manual Valve				

JMJ Series Mechanical Valves



JMJ	52	2	R
-----	----	---	---

Model Code	Positon Code	Port Size	Button Type
JMJ Type Mechanical Valve	52:Two-Position Five-Way	02:G1/4	Blank:Basic Type R:Roller Type TB:Selector Knob Type EB:Lockable Knob Type PP:Flat Button PPL:Convex Button PB:Large Round Button

MV322 Series Mechanical Valves



MV	32	2	R
----	----	---	---

Model Code	Positon Code	Port Size	Button Type
MV Type Mechanical Valve	32:Two-Position Three-Way	02:G1/4	Blank:Basic Type R:Roller Type TB:Selector Knob Type EB:Lockable Knob Type PP:Flat Button PPL:Convex Button PB:Large Round Button

MV522 Series Mechanical Valves



MV	52	1	R
Model Code	Positon Code	Port Size	Button Type
MV Type	52:Two-Position	02:G1/4	Blank:Basic Type
Mechanical Valve	Five-Way		R:Roller Type
			TB:Selector Knob Type
			EB:Lockable Knob Type
			PP:Flat Button
			PPL:Convex Button
			PB:Large Round Button

M5 Series Mechanical Valves



M5	PM	210	1	R	
Structure Code	Spec Code	Series Code	Port Size	Button Color	
M5:M type, 5 ports, 2 positions	B:Basic Type Mechanical Valve	110:110 Series	110 Series:	PL	R:Red
	C:Long-Handle Manual Valve	Single Control	1:G1/8		R:Red
	D:Short-Handle Manual Valve		210 Series:	PP/PF/	G:Green
	Y:Rocker arm Manual Valve	210:210 Series	1:G1/8	PM/HS	B:Black
	R:Roller Lever Type Mechanical Valve	Single Control	2:G1/4		Y:Yellow
	L:Unidirectional Roller Lever Mechanical Valve			Others	No
	PL:Detent Rotary Button Type Manual Valve				
	(Only Red Available)				
	PP:Protruding Button Type Manual Valve				
PF: Flat Head Button Type Manual Valve					
PM:Mushroom Head Button Type Manual Valve					
HS:Selector Type Manual Valve					

M3 Series Mechanical Valves



M3	PM	210	1	R	
Structure Code	Spec Code	Series Code	Port Size	Button Color	
M3:M type, 3 ports, 2 positions	B:Basic Type Mechanical Valve	110:110 Series	110 Series:	PL	R:Red
	C:Long-Handle Manual Valve	Single Control	1:G1/8		R:Red
	D:Short-Handle Manual Valve				
	Y:Rocker arm Manual Valve	210:210 Series	210 Series:	PP/PF/	G:Green
	R:Roller Lever Type Mechanical Valve	Single Control	1:G1/8	PM/HS	B:Black
	L:Unidirectional Roller Lever Mechanical Valve				
	PL:Detent Rotary Button Type Manual Valve				
	(Only Red Available)		2:G1/4		Y:Yellow
	PP:Protruding Button Type Manual Valve			Others	No
	PF: Flat Head Button Type Manual Valve				
PM:Mushroom Head Button Type Manual Valve					
HS:Selector Type Manual Valve					

S3 Series Mechanical Valves



S3	PM	1	R	
Structure Code	Spec Code	Port Size	Button Color	
S3:S type, 3 ports, 2 positions	B:Basic Type Mechanical Valve	100 Series:	PL	R:Red
	C:Long-Handle Manual Valve	1:G1/8		R:Red
	D:Short-Handle Manual Valve	200 Series:	PP/PF/	G:Green
	Y:Rocker arm Manual Valve	1:G1/8	PM/HS	B:Black
	R:Roller Lever Type Mechanical Valve	2:G1/4		Y:Yellow
	L:Unidirectional Roller Lever Mechanical Valve		Others	No
	PL:Detent Rotary Button Type Manual Valve			
	(Only Red Available)			
	PP:Protruding Button Type Manual Valve			
	PF: Flat Head Button Type Manual Valve			
PM:Mushroom Head Button Type Manual Valve				
HS:Selector Type Manual Valve				